

SURYA TRB COACHING CENTRE, MADURAI



(a place.. You try to achieve)
(The No.1 Institute for Zoology In TN)



Cell: 81246 02428, 94435 64713, 75983 02428

PG TRB EXAM 2021 - ZOOLOGY

PG ZOOLOGY MODEL TEST (UNIT - I to X)

1. The non-motile, spherical and non-pathogenic form of *Entamoeba histolytica* is
A) Trophic form B) Minuta form C) Metocyst D) Monopodial form
2. **Schizogony** in *Plasmodium* in
A) R.B.C of man B) Alimentary canal
C) Liver of the host D) Liver and R.B.C of host
3. What is **true** about *Trypanosoma gambiense*
A) It has two locomotory organelles, a flagellum and an undulating membrane
B) It is found in no other animal except tse-tse fly
C) It reproduces asexually by multiple fission
D) It has two nuclei a macronucleus and a micronucleus
4. Malaria fever coincides with liberation of
A) Cryptomerozoites B) Metacryptomerozoites
C) Merozoites D) Trophozoites
5. Which one of the character exhibits resemblance of Hemichordata with annelid?
A) Gill slits B) Nerve cord C) The vascular system D) Larval forms
6. Which of the following is responsible for current of food and water to enter in the body of *Amphioxus*?
A) Velar tentacles B) Cilia of the pharynx C) Frontal cilia D) Coelomic canal
7. **Assertion (A):** In *Branchiostoma*, the origin of coelom is enterocoelic
Reason (R) : In *Branchiostoma* coelom is formed by the splitting of mesodermal sheet
A) Both A and R are true and R is correct explanation of A
B) Both A and R are true, but R is not correct explanation of A
C) A is true, but R is false
D) A is false, but R is true

State Level Rank Achievement - 2019

State Rank I to X = 27 candidates

(State I Rank = 2, State IV = 1, State V = 3, State VI = 1,
State VII = 3, State VIII = 7, State IX = 6, State X = 4)

State First Rank Holders - 2019

V.Jothi & M.Muthusethukkarasi

8. Which of the following pairs is / are **correctly** matched?

Animals

Excretory organ

- i. Herdmania - Neural gland
ii. Balanoglossus - Protonephridia
iii. Amphioxus - Proboscis gland

Select the **correct** answer using the codes given below:

- A) ii and iii B) i and ii C) i and iii D) i alone

9. Transfer of *Taenia* to **secondary host** occurs as

- A) Onchosphere B) Cysticercus C) Morula D) Egg

10. Unlike other trematodes *Schistosoma haematobium* is dioecious and

- A) The large male retains the smaller female in its gynaecophoric canal and all live in portal vein
B) The larger female retains the small male in its gynaecophoric canal and all live in portal vein
C) Males are seen in public plexuses and females in portal vein
D) Males are seen in portal vein and females in public plexuses

11. Indicate the **correct** answer pertaining to *Ascaris*

- A) A larval stage of *Ascaris* is swallowed by cattle which in turn infects human beings
B) Snails act as secondary host of *Ascaris*
C) The eggs of *Ascaris* containing second stage juvenile larva when swallowed by man becomes infective
D) Once inside the intestine, the *Ascaris* larva develops directly into adult without entering other organs of the host

12. The **first step** of β -oxidation involves the activation of fatty acid in the presence of

- A) ATP and aldehyde dehydrogenase B) ATP and thiokinase enzyme
C) ATP and β -ketoacyl thiolase D) Ca^{++} and thiokinase enzyme

13. Most of the energy in the cells is liberated by oxidation of carbohydrates when

- A) pyruvic acid is converted into acetyl CoA
B) pyruvic acid is converted into CO_2 and H_2O
C) Sugar is converted into pyruvic acid
D) Glucose is converted into alcohol and CO_2

14. **Pantothenic acid** is a constituent of the coenzyme in

- A) acetylation B) decarboxylation C) oxidation D) reduction

Trichy, Tiruchirappalli, Nagapattinam, Vellore.

The No.1 Institute for Zoology
SURYA TRB Coaching Centre
(a place... you try to achieve)
Exclusively for Zoology
Madurai -1
(Run by : Surya Educational Trust - Regd.)
Contact : 8124602428, 9443564713, 7598302428

Admission is Going on...

SUCCESS PILLARS - 2019

Institute	Success Rate (%)	Count
Surya Coaching Centre	53.4%	71
Others	46.6%	62

15. Select the option that **correctly** fills the blanks
- i) α – Ketoglutarate of Krebs' cycle produces an important amino acid called _____
- ii) Oxaloacetate produces an important amino acid called _____
- iii) Oxidation of one molecule of FADH_2 forms _____ ATP molecules
- iv) The net gain of ATP in aerobic respiration by substrate level phosphorylation is _____ molecules
- | i | ii | iii | iv |
|--------------|-----------|-----|----|
| A) aspartate | glutamate | 4 | 2 |
| B) glycine | aspartate | 2 | 4 |
| C) arginine | valine | 4 | 2 |
| D) glutamate | aspartate | 2 | 4 |
16. **Acetyl CoA** is produced from pyruvate by
- A) Substrate level phosphorylation B) oxidative decarboxylation
- C) oxidative hydrogenation D) oxidative phosphorylation
17. Which statement about enzyme inhibitors is **not true**?
- A) A competitive inhibitor binds the active site of the enzyme
- B) An allosteric inhibitor binds a site on the active form of the enzyme
- C) A noncompetitive inhibitor binds a site other than the active site
- D) Non competitive inhibition cannot be completely overcome by the addition of more substrate.
18. Consider the following statements
- In citric acid cycle**
- a) Three hydride ions (hence, six electrons) are transferred to three NAD^+ molecule.
- b) One pair of hydrogen atoms (hence, two electrons) is transferred to one NADP^+ molecule.
- c) One pair of hydrogen atoms (hence, two electrons) is transferred to one FAD molecule.
- d) One NADH molecule is utilized in the process.
- Which of the statements given above are **correct**?
- A) a, b B) a, d C) b, d D) a, c
19. The α -helix of a polypeptide chain is coiled spirally in right handed manner and is stabilised by
- A) electrostatic interactions B) hydrogen bonds
- C) disulphide bridges D) hydrophobic interactions
20. C-AMP mediated '**Cascade Model**' of enzyme regulation was proposed by
- A) Fisher B) Sutherland C) Sumner D) Koshland
21. "**Histidine decarboxylase catalyse breaking covalent bonds between (C-C) atoms of histidine to given rise to CO_2 and histamine.**" It represents that enzyme histidine decarboxylase belongs to
- A) Hydrolases B) Lyases C) Isomerases D) Ligases

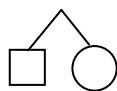
22. In column chart, **bars** are:
 A) horizontal B) vertical C) slanting D) none of the above
23. **Histogram** is suitable for:
 A) time series data B) chronological distribution
 C) none of (A) or (B) D) both (A) and (B)
24. Which of the given measures of dispersion is considered **best**?
 A) standard deviation B) range C) variance D) coefficient of variation
25. Which is **true** about simple random sampling
 A) Techniques provide least number of possible samples
 B) Every fixed unit is taken for selection
 C) All units have equal chance to be selected
 D) Only selected units have right to be selected
26. The **mean and mode** for the following data 8,9,16,25,4,6,25,3,19,18
 A) Mean=133, Mode=8.0 B) Mean=13.3, Mode=25.0
 C) Mean=135, Mode=25.0 D) Mean=13.5, Mode=23.0
27. Median height can be easily identified from:
 A) Bar diagram B) Line diagram C) Ogive D) Pie diagram
28. If the data are classified on the basis of measurement like weight, height, age and production etc. the **type of classification** is called as
 A) Quantitative classification B) Chronological classification
 C) Alphabetical classification D) Geographical classification
29. The significance of **rank correlation** can be tested by;
 A) X^2 -test B) F-test C) Z-test D) t-test
30. Consider the following statements and choose the **correct** answer from the options that follow:
 1. Component bar diagram contains two or more bars arrange side by side
 2. Area of palygon is equal to the area of bar graph.
 A) Statement (1) is wrong, but (2) is correct
 B) Statement (1) is correct, but (2) is wrong
 C) Both the statements (1) and (2) are correct
 D) Both the statements (1) and (2) are wrong
31. The **theory of testing of hypotheses** was propounded by;
 A) Karl Pearson B) J.Neyman C) J.Neyman D) Both A and B
32. In the regression equation of **Y on X**
 $(Y - \bar{Y}) = \frac{r \sigma_y}{\sigma_x} (X - \bar{X})$, $\frac{r \sigma_y}{\sigma_x}$ can be substituted by
 A) $\frac{b \times y}{2}$ B) $y + bx$ C) $x + by$ D) byx

33. **Column – I** **Column – II**
- | | | |
|-----------------|---|---|
| A. Cryptogram | - | 1. Component of promoter |
| B. CAAT box | - | 2. The site of DNA on which RNA polymerase binds during transcription |
| C. Prinbnow box | - | 3. m-RNA coded language |
| D. Promoter | - | 4. A conserved region in Promoter part of DNA |
- Codes:**
- | | | | | | | | |
|----------|----------|----------|----------|----------|----------|----------|----------|
| A | B | C | D | A | B | C | D |
| A) 3 | 1 | 2 | 4 | B) 4 | 2 | 1 | 3 |
| C) 3 | 1 | 4 | 2 | D) 4 | 3 | 1 | 2 |
34. Genes containing **introns** are called
- A) silent genes B) spit genes C) structural genes D) pseudogenes
35. Which of the following is **true** of the carbohydrate portion of the cell membrane?
- A) It has a symmetric distribution
B) It is found primarily in the form of free saccharide groups
C) It forms the glycocalyx consisting of glycolipids and glycoproteins
D) It contributes to the polycationic charge on the extracellular surface
36. A genetic experiment was performed to map the gene(s) for eye colour in a newly-discovered moth species. Sex determination in this moth species. XY-male XX-female. When blue-eyed males were mated to green eyed females, all of both male and female progeny had green eyes. When these progeny were mated among themselves, about half of the males of the resulting second generation had blue eyes; however, all females were green-eyed. **Which one of the following is consistent with the above data?**
- A) Multiple genes control eye colour in this moth species
B) Gene(s) for eye colour is located on the X chromosome
C) Gene(s) for eye colour is located on the Y chromosome
D) Gene(s) for eye colour may not be sexlinked
37. The number of **chiasmata** are
- A) inversely proportional to the length of chromosomes
B) directly proportional to the length of the chromosomes
C) independent of the length of the chromosomes
D) more in bactreis
38. Which statement about microtubules is **incorrect**?
- A) They form the spindle fibres involved in movement of chromosomes duing mitosis and meiosis
B) Thy are involved in cell support and shape
C) They are made up of carbohydrate molecules called phospholipids
D) They are involved in the movement of cilia and flagella

2017 TRB - PG Zoology தேர்வில் Surya Coaching - ன் சாதனைகள் :

தேர்வு செய்யப்பட்ட 180 பேரில் 71 பேர் தேர்ச்சி (39.4%)

39. The enzyme **aminoacyl synthetase** facilitates
- Joining of two neighbouring amino acids on ribosomes
 - Adoption of amino acid by a t-RNA molecule of its type
 - Insertion of aminoacyl-tRNA into the ribosomal A-sites
 - Transfer of aminoacyl-tRNA from the ribosomal A-site to P-site
40. DNA exists in a double-stranded form whereas RNA is mainly a single stranded molecule. **What is the likely reason for DNA being double stranded?**
- RNA strands cannot form base pairs.
 - Double stranded DNA is a more stable structure.
 - DNA cannot exist in the single stranded form.
 - It is easier to replicate double stranded DNA than single stranded RNA.
41. Which one of the following is **correct set** of secondary structures found in a t-RNA molecule ?
- D-loop arm, amino acid arm with CCA 3'tail, TΨC loop, anticodon arm
 - GGU tail at 3', L-loop arm, TTC loop, anticodon arm
 - D-loop, G-PO₃ tail at 3' end, CCA tail at 5' end, anticodon arm
 - AAA 3' tail, indicator loop, CΨC loop, anticodon arm
42. Consider the following statements regarding **linkage of genes**
- Two genes are said to be linked when they independently assort
 - The strength of the linkage is determined by the distance between the two genes in question
 - The strength of the linkage is inversely proportional to the distance between the two genes
- Of these statements**
- 1, 2 and 3 are correct
 - 1 and 2 are correct
 - 2 and 3 are correct
 - 1 and 3 are correct
43. The frequency of crossing over would be higher if
- two genes are located closely
 - two genes are far apart on chromosome
 - two genes are not located on the same chromosome
 - None of the above
44. The progenies of a **colour blind woman and a normal man** will be
- 100% colour blind girls and 100% carrier boys
 - 100% colour blind boys and 50% carrier girls
 - 100% colour blind boys and 100% carrier girls
 - 50% colour blind boys and 50% carrier girls
45. The gene which gets suppressed by the presence of **non-allelic gene** is termed as
- epistatic gene
 - recessive gene
 - hypostatic gene
 - supplementary genes
46. What does the given **symbol** dignify ?



- Consanguineous mating
- still birth
- Dizygotic twins
- Identical twins

47. In gene mapping **one map unit** is equal to
 A) 1 percent crossover B) 10 percent crossover
 C) 100% crossing over D) 0.1 percent crossover
48. Artificial gene for alanine t RNA with 77 base pairs was **first** synthesized by
 A) Khorana et.al., (1968) B) Nirenberg and Mathaci (1967)
 C) Beadle and Tatum (1966) D) Watson and Crick (1958)
49. **Mendel's law of segregation**, as applied to the behaviour of chromosome in meiosis, means that in
 i) Paring of homolog's will convert one allele into the other, leading to separation of the type
 ii) Alleles of a gene separate from each other when homologs separate in meiosis I, or in meiosis II if there is a single crossover between the gene and the centromere
 iii) Genes on the same chromosome will show 50% recombination and 20% no combination
 iv) Genes on different chromosome will show 50% recombination and 10% no combination
 A) i and iii are correct B) ii is correct C) ii and iii are correct D) iii and iv are correct
50. The order in which the following enzymes participate in the replication of DNA in bacteria
 i) DNA polymerase – I ii) 5'-Exonuclease iii) DNA polymerase – II
 iv) DNA Ligase v) RNA Polymerase (Primase)
 A) v iii i iv ii B) iii ii v iv C) v iii iv ii D) v iii ii iv
51. By which method of introduction of rDNA into **animal cells**
 A) Electrophoration B) Microinjection C) Both A & B D) Short gun method
52. **Match** the genetic phenomena with their respective ratios
 a. Inhibitory gene ratio - 1. 9:3:4
 b. Complementary gene ratio - 2. 1:1:1:1:1
 c. Recessive epistasis ratio - 3. 12:3:1
 d. Dihybrid test cross ratio - 4. 13:3
 e. Dominant epistasis ratio - 5. 9:7
 A) a-5, b-7, c-3, d-2, e-1 B) a-4, b-5, c-1, d-2, e-3
 C) a-1, b-2, c-4, d-3, e-5 D) a-5, b-4, c-1, d-2, e-3
53. The **jumbling genes** were discovered in _____ by _____ and are similar to transposons
 A) *Zea mays*, Barbara Mclinktok B) *Pisum*, Barbara Mclinktok
 C) *Zea mays*, Guha and Maheshwari D) *Lillium*, Guinguard
54. The part of Ti plasmid transferred into plant cell DNA is called
 A) B-DNA B) T-DNA C) Z-DNA D) A-DNA

District First - 13 Candidates

Tirunelveli, Thoothukudi, Ramnad, Sivagangai, Virudhunagar, Theni,
 Madurai, Dindugal, Tirupur, Erode, Namakkal, Karur, Thanjavur.

District Second - 12 Candidates

Kanyakumari, Thoothukudi, Ramnad, Sivagangai, Virudhunagar, Dindugal,
 Tirupur, Salem, Karur, Nagapattinam, Thanjavur, Villupuram.

District Third - 9 Candidates

Tirunelveli, Ramnad, Virudhunagar, Madurai, Coimbatore,
 Erode, Trichy, Nagapattinam, Vellore.

55. **Assertion(A)** : Allopolyploids develop through hybridisation between two species followed by doubling of chromosomes

Reason (R) : Allopolyploids are recognized and functions as new species

A) Both A and R are true and R is correct explanation of A

B) Both A and R are true, but R is not correct explanation of A

C) A is true, but R is false

D) A is false, but R is true

56. The binding of O_2 to hemoglobin displace CO_2 from it . This is called

A) Bhor's effect

B) Haldane effect

C) chloride shift

D) oxygen dissociation curve

57. Different types of excretory structure and animals are given below. Match them appropriately and mark the **correct answer** from among those given below:

Excretory structure / organ

- Animals

a. Protonephridia

- 1. Prawn

b. Nephridia

- 2. Cockroach

c. Malpighian tubules

- 3. Earthworm

d. Green gland or Antennal gland

- 4. Flat worms

a b c d
A) 3 1 2 4

a b c d
B) 3 4 2 1

C) 4 3 2 1

D) 1 3 2 4

58. Consider the following statement and select the **correct** option stating which ones are **true (T)** and which ones are **false (F)**

i) Oxygen easily binds with haemoglobin in the pulmonary blood capillaries under low partial pressure

ii) CO_2 is comparatively less soluble in arterial blood than in venous blood

iii) pO_2 in the alveoli is higher than that of the deoxygenated blood in the capillaries of the pulmonary arteries

iv) The formation of carbaminohaemoglobin occurs on the alveolar surface only

i ii iii iv
A) F T F F

i ii iii iv
B) T T F F

C) F T T F

D) T F T F

59. **Castle's intrinsic factor** helps in the absorption of ____ the ileum

A) vitamin B_1

B) vitamin B_5

C) vitamin B_{12}

D) vitamin B_6

60. Consider the following processes:

1) Breakdown of creatine phosphate

2) Conversion of ATP into ADP

3) Formation of lactic acid

4) Formation of fructose diphosphate

The **correct sequence** of these events during muscular contraction is

A) 4-3-2-1

B) 2-1-4-3

C) 4-1-2-3

D) 2-3-4-1

(Run by : Surya Educational Trust - Regd. No.: 43/2017)

Contact : 81246 02428, 94435 64713, 75983 02428.



SURYA TRB COACHING CENTRE

(Exclusively for Zoology, Madurai)

Cell : 8124602428, 9443564713, 7598302428

TRB - PG Zoology 2019 Results

தேர்வு செய்யப்பட்ட 133 பேரில் 71 பேர் தேர்ச்சி (53.4%)

State Level Rank Achievement - 2019

State Level Rank I to X = 27 Candidates

State I Rank = 2, State IV = 1, State V = 3,
State VI = 1, State VII = 3, State VIII = 7,
State IX = 6, State X = 4

State First Rank Holders



V. Jothi

19PG071313253



M. Muthusethukkarasi

19GP071313472

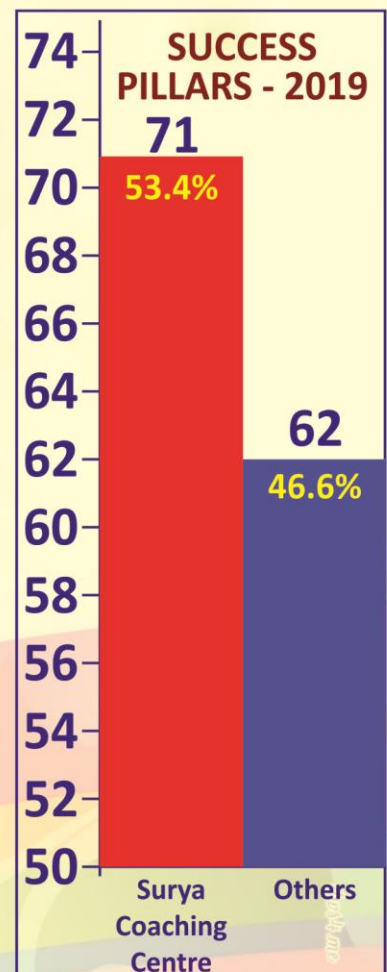
Again we proved the No.1 Institute for
Zoology in Tamil Nadu

SURYA TRB COACHING CENTRE

(Run by : Surya Educational Trust - Regd.) Madurai-1

Cell : 8124602428, 9443564713, 7598302428

Email : suryaeducationaltrust2017@gmail.com



61. The **correct sequence** of complete hydrolysed proteins is
 A) Proteins –proteoses-peptones-polypeptides-dipeptides-amino acids
 B) Proteins - peptones- polypeptides- proteoses- dipeptides-amino acids
 C) Proteins - amino acids- peptones- polypeptides- dipeptides- proteoses
 D) Proteins - polypeptides- dipeptides- amino acids- prosteoses- peptone
62. Match the items given in column I with those in Column II and select the **correct** option given below.

Column I

Column II

- | | | |
|--------------------|---|--|
| a. Tricuspid valve | - | i. Between left atrium and left ventricle |
| b. Bicuspid valve | - | ii. Between right ventricle and pulmonary artery |
| c. Semilunar valve | - | iii. Between right atrium and right ventricle |

- a b c**
- A) iii i ii
- C) i ii iii

- a b c**
- B) i iii ii
- D) ii i iii

63. Calcium is important in skeletal muscle contraction because it
 A) binds to troponin to remove the masking of active sites on actin for myosin
 B) activities the myosin ATPase by binding to it.
 C) detaches the myosin head from the actin filament.
 D) prevents the formation of bonds between the myosin cross bridges and the actin filament.

64. Match the following

List - I (Digestive enzyme)

List - II (Substrate)

- | | | |
|-----------------------|---|--------------------|
| a) Cathepsin | - | 1) Triglyceride |
| b) Pancreatic amylase | - | 2) Oligosaccharide |
| c) Lipase | - | 3) Protein |
| d) Glucosidase | - | 4) Lipoprotein |
| | - | 5) Polysaccharide |

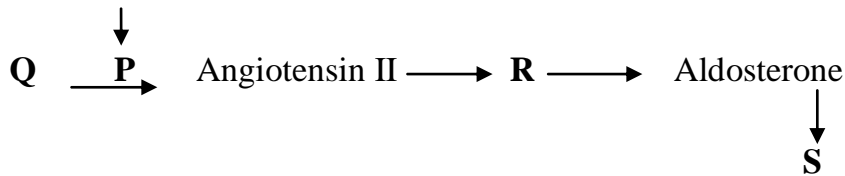
- Codes :**
- | | |
|-------------------------------|-------------------------------|
| a b c d | a b c d |
| A) 3 5 1 2 | B) 4 3 1 2 |
| C) 4 3 2 1 | D) 3 5 2 1 |

65. Study the graphical representation of **ECG** and select the **correct option**
 A) P wave – atrial repolarisation ; QRS wave – ventricular depolarization ; T wave – atrial repolarisation
 B) P wave – atrial depolarisation ; QRS wave – ventricular repolarization ; T wave – atrial repolarisation
 C)) P wave – ventricular depolarisation ; QRS wave – atrial depolarization; T wave – atrial repolarisation
 D) P wave – atrial depolarisation ; QRS wave – ventricular depolarization ; T wave – ventricular repolarisation

(Run by : Surya Educational Trust - Regd. No.: 43/2017)

Contact : 81246 02428, 94435 64713, 75983 02428.

66. Identify P, Q, R and S and select the **correct** option juxtaglomerular cells



	P	Q	R	S
A)	ANF	Angiotensinogen	Adrenal cortex	Increased Na^+ absorption
B)	ANF	Angiotensinogen I	Adrenal Medulla	Decreased Na^+ absorption
C)	Renin	Angiotensinogen	Adrenal cortex	Increased Na^+ absorption
D)	Renin	Angiotensin I	Adrenal Medulla	Decreased Na^+ absorption

67. Which two regions are connected through **perilymph**

- A) Scala tympani - Scala media
- B) Scala vestibuli - Scala media
- C) Membranous labyrinth - middle ear
- D) Scala vestibuli - scala tympani

68. **Bartholin's glands** are situated

- A) on each side of the vas deferens in human males
- B) on each side of the vaginal orifice in human females
- C) on each side of the bulbourethral glands in human males
- D) on each side of the urethral orifice in human females

69. Which of the following statement is **wrong** regarding conduction of nerve impulse?

- A) In a resting neuron the axonal membrane is more permeable to K^+ ions and nearly impermeable to Na^+ ions.
- B) Fluid outside the axon has a high concentration of Na^+ and low concentration of K^+ , in a resting neuron
- C) Ionic gradients are maintained by Na-K pumps across the resting membrane, which transport 3 Na^+ ions outwards for 2 K^+ ions into the cell
- D) In a polarised neuron, the outer surface of the axonal membrane possess a negative charge and its inner surface is positively charged.

70. **Consider the following hormones**

- 1) Antidiuretic hormone 2) Aldosterone 3) Parathormone 4) Oxytocin

In the vertebrate animals, the hormones involved in the control of **osmoregulation** would include

- A) 1,2,3 and 4 B) 1,2, and 3 C) 1 and 2 D) 2 and 4

71. During **chemical transmission**, the following events occur at synaptic junction

- 1) Transmitters cross synaptic cleft and attach to receptors on the postsynaptic neurons
- 2) Postsynaptic membranes are depolarized initiating the impulse
- 3) Chemical excitation at the presynaptic terminal and release of neurotransmitters
- 4) Immediately after the impulse is triggered, the recovery of pre-and postsynaptic membranes follows and neurotransmitter is destroyed

The correct sequence of these events is

- A) 1,3,4,2 B) 3,1,4,2 C) 3,1,2,4 D) 1,3,2,4

72. Migration of individual cells from the surface into the embryo's interior is termed as
A)ingression B)involution C)invagination D) delamination
73. Capacitation of mammalian sperms allows them to be activated within the uterus and facilitate fertilization. The following statements were made regarding events occurring during capacitation
i) removal of cholesterol from sperm head
ii) removal of non-covalently bound glycoproteins
iii) Increased expression of fibronectin
iv) Decreased permeability of calcium ions
Identify the **correct** statements
A)ii, iii and iv B) i, ii and iv C)i, ii and iii D)i, iii and iv
74. Study the given table and **identify P, Q and R**
- | Endocrine gland | Hormone | Disorder |
|-----------------------------|-----------------|----------------------|
| Thyroid | - P | - Cretinism |
| Q | - Cortisol | - Cushing's syndrome |
| Posterior lobe of Pituitary | - vasopressin | - R |
| P | Q | R |
| A) Calcitonin | Adrenal medulla | Addison's disease |
| B) Thyrocalcitonin | parathyroid | Diabetes mellitus |
| C) Thyroxine | Hypothalamus | Myxoedema |
| D)Triiodothyronine | Adrenal cortex | Diabetes insipidus |
75. **Marine Birds** excrete the excess salt through
A) Salt absorbing cells B) Salt secretory cells of gills
C) Nasal gland D) Kidney
76. A tissue of the embryo transmits stimulus to influence another tissue of the embryo to produce a structure. The former is known as
A) producer B) inductor or organizer C) promoter D) none of these
77. On the basis of the distribution of villi on chorion, **human placenta** is called
A) haemochorial B) metadiscoidal C) discoidal D) cotyledonary



SURYA TRB COACHING CENTRE

(Exclusively for Zoology, Madurai)

Cell : 8124602428, 9443564713, 7598302428

TRB - PG Zoology 2019 Results

தேர்வு செய்யப்பட்ட 133 பேரில் 71 பேர் தேர்ச்சி (53.4%)

State Level Rank Achievement - 2019

State Level Rank I to X = 27 Candidates

State I Rank = 2, State IV = 1, State V = 3,

State VI = 1, State VII = 3, State VIII = 7,

State IX = 6, State X = 4

78. Match the following

List - I		List - II			a	b	c	d
(Type of placenta)		(Example)						
a) Epitheliochorial	-	1) Dog	A)	4	5	3	1	
b) syndesmochorial	-	2) platypus	B)	2	4	3	1	
c) Endotheliochorial	-	3) Monkey	C)	4	5	1	3	
d) Homochorial	-	4) Pig	D)	2	4	1	3	
		5) Deer						

79. Which one of the following options gives the **correct** matching of human antibody with its characteristics?

Antibody	Structure	%of total serum antibody	Placental transfer
A) IgE	Monomer	80%	No
B) IgM	Dimer	5-10%	No
C) IgA	Dimer	10-15%	No
D) IgD	Monomer	0-2%	Yes

80. **Assertion(A)** : All primates have monophyletic origin

Reason (R) : The primates originated in Palaeocene epoch from small terrestrial shrew like insectivores

- A) Both A and R are true and R is correct explanation of A
 B) Both A and R are true, but R is not correct explanation of A
 C) A is true, but R is false
 D) A is false, but R is true

81. Which of the following statement is **incorrect**?

- A) During secondary immune response, the antibodies are mainly IgG with high affinity for antigens.
 B) Darwin's finches of Galapagos Islands developed different modified beaks due to divergent evolution.
 C) *Homo sapiens neanderthalensis* was the direct ancestor of the living modern man
 D) Toxoid is a modified bacterial toxin that has been made non- toxic but retains the capacity to stimulate the formation of antitoxin.

82. Select the **correct** option that correctly fills the blanks.

- I) _____ is a type of organ transplantation between individuals of same species but not genetically identical.
 II) A species that has two or more varieties of subspecies is called _____ species.
 III) According to _____ theory, a single mutation can at times give rise to a new species.
 IV) _____ cannot induce an immune response by themselves but can do so in combination with a carrier.

I	II	III	IV
A) Xenograft	sibling	mutation	interferons
B) Allograft	polytypic	mutation	Haptens
C) Isograft	parapatric	Lamarck's	Perforins
D) Xenograft	sibling	Darwin's	Interferons

Dedicated Hard work!

Sure Success!

நீங்களும் அரசு பள்ளிகளில் ஆசிரியராவதற்கு இன்றே சேருங்கள் !

SURYA TRB COACHING CENTRE

MADURAI (a place.. You try to achieve)

(Exclusively for ZOOLOGY)

செல் : 8124602428, 9443564713, 7598302428

**அனைத்து UG மற்றும் PG ஆசிரியர்களுக்கான TRB பயிற்சி வகுப்புகள்
விவாக்யல் பாடத்திற்கு மட்டும் நடைபெற்று வருகிறது (Exclusively for ZOOLOGY).**

**15 ஆண்டுகளாக TRB போட்டித் தேர்விற்கான பயிற்சியில் அனுபவமுள்ள
(கடந்த 2012ம் ஆண்டு AEEO Exam 5 நபர்கள் Selected (State 1st, 2nd) - Out of 7
Posts, 2013ம் ஆண்டு 3 நபர்கள் Selected (State 1st, 3rd) - out of 4 Posts.**

**2012 ம் ஆண்டு TRB போட்டித் தேர்வில் 61 முதுகலை ஆசிரியர்களுடையும்,
2014 ம் ஆண்டு 35 ஆசிரியர்களுடையும், 2015 ம் ஆண்டு STATE FIRST, 3rd, 4th and 7th
Rank பெற்று 39 ஆசிரியர்களுடையும் மற்றும் 2016 ம் ஆண்டு DIET Lecturer தேர்வில்
அறிவிக்கப்பட்ட 11 பணியிடங்களில் 6 ஆசிரியர்களுடையும்) வெற்றி பெறச் செய்த
சிற்றந்த ஆசிரியர்களால் நடத்தப்படுகிறது.**

**2019 TRB - PG Zoology தேர்வில் Surya Coaching - ன் சாதனைகள்
தேர்வு செய்யப்பட்ட 133 பேரில் 71 பேர் தேர்ச்சி (53.4%)**

State Level Rank Achievement - 2019

State Rank I to X = 27 Candidates

**State I Rank = 2, State IV = 1, State V = 3, State VI = 1,
State VII = 3, State VIII = 7, State IX = 6, State X = 4**

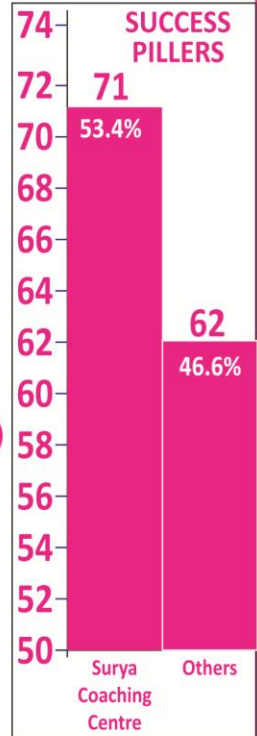
**2017 TRB - PG Zoology தேர்வில்
Surya Coaching - ன் சாதனைகள்**

தேர்வு செய்யப்பட்ட 180 பேரில் 71 பேர் தேர்ச்சி (39.4%)

State Level Rank Achivement - 2017

State Rank II to X = 31 candidates

**Admission
going on...**



83. With reference to Bombay Natural Society (**BNHS**), consider the following statements :
- It is an autonomous organization under the ministry of environment and Forest
 - It strives to conserve nature through action - based research, education and public awareness
 - It organizes and conducts nature trails camps for the general public
- Which of the statements given above is / are **correct**?
- A) I and III only B) II only C) II and III only D) I, II and III
84. Find the **wrong** statement with reference to **Shelford Law of tolerance**
- Organisms have only upper tolerance limit for every factor
 - Most factors act in concert rather than isolation
 - Tolerance level will be determined by examination of morphological features
 - Different species differ from each other in terms of tolerance range
- A) A and B only B) A and C only C) B, C and D only D) B and D only
85. Match column I with column II and select the correct option)
- | Column I | Column II | Code: |
|-----------------------|----------------------------|---------------------------|
| a) Hotspot | i) Sundarbans | A) a-iv, b-v, c-i, d-iii |
| b) Wildlife sanctuary | ii) Simlipal | B) a-iv, b-i, c-iii, d-vi |
| c) National park | iii) Aravalli in Rajasthan | C) a-i, b-iii, c-ii, d-vi |
| d) sacred forest | iv) Western Ghats | D) a-iv, b-v, c-ii, d-i |
| | v) Bir Moti Bagh | |
| | vi) Khecheopalri in Sikkim | |
86. Consider the following and select the correct option
- | In situ conservation | ex situ conservation |
|--|--|
| i) it is conservation of endangered species in their natural habitats. | - It is conservation of endangered species outside their natural habitats. |
| ii) Endangered species are kept under human supervision. | - The depleting resources are augmented. |
| iii) offspring produced in captive breeding released in natural habitat for acclimatization. | - The population recovers in natural environment. |
- A) i and iii are incorrect B) i and ii are incorrect
- C) only iii is incorrect D) ii and iii are incorrect
87. Select the **incorrect** statement regarding Eltonian pyramids.
- The biomass transferred from lower trophic level to higher trophic level is about 10-20%
 - Pyramids of energy is more accurate than pyramid of biomass or the pyramid of numbers
 - Pyramid of biomass may be inverted for terrestrial habitats
 - Eltonian pyramids have no place for detritivores and decomposers

88. Select the options with **correct** fill ups

- A) _____ constitute the second trophic level in a food chain
 B) Pilot fish and shark shows _____
 C) Pyramid of _____ is upright in pond ecosystem

A

- A) Secondary carnivores
 B) Primary consumers
 C) Scavengers
 D) Secondary consumers

B

- amensalism
 Commensalism
 amensalism
 Commensalism

C

- biomass
 energy
 energy
 biomass

89. Match the column I with II and select the correct option

Column I

- a) Bhopal gas disaster
 b) Wildlife Production Act
 c) Water Act
 d) Air Act
 e) Forest Conservation Act

Column II

- i) 1972
 - ii) 1974
 - iii) 1981
 - iv) 1980
 - v) 1984

Code:

- A) a-v, b-i, c-ii, d-iii, e-iv
 B) a-ii, b-i, c-iv, d-v, e-iii
 C) a-i, b-iv, c-ii, d-iii, e-v
 D) a-iii, b-v, c-i, d-ii, e-iv

90. Select the **mismatched pair**

- A) Littoral zone – shallow water zone
 B) Limnetic zone – Open water body
 C) Euphotic zone – Receives no light
 D) Disphotic zone – Receives diffused light

91. **Project Tiger in Mudhumalai Tiger** Rescue was approved by National Tiger conservation Authority on

- A) 16 July 2010 B) 16 August 2010 C) 16 September 2010 D) 16 October 2010

92. **Kalakadu- Mundanthurai Tiger Reserve** forms part of

- A) Nilagiri Biosphere reserve
 B) Agasthyamalai Biosphere reserve
 C) Mudhumalai National Park
 D) None of these

93. Which of the following statement (s) is/are **correct** about biogeochemical cycle:

- i) Carbon and nitrogen cycle faster than phosphorous cycle.
 ii) All biogeochemical cycle include both organisms and nonliving components
 iii) Most elements remain longest in the living portion of their cycle.
 iv) The chemical elements used by organisms in large quantities cycle back and forth between organisms and environment

- A) i,iii B) i,ii,iv C) i,ii,iii D) i,ii,iii,iv

94. Biosphere Reserve Programme was launched by **UNESCO** in

- A) 1961 B) 1971 C) 1981 D) 1991

95. **Match** the column I with II and select the **correct** option

Column I

- a) Ramsar site
 b) Biosphere reserve
 c) Ex-situ conservation
 d) Hotspot

Column II

- i) Gulf of mannar
 - ii) offsite collections
 - iii) indo-burma region
 - iv) Chandra Tal

- A) a-i, b-ii, c-iii, d-iv
 B) a-iv, b-i, c-ii, d-iii
 C) a-i, b-iii, c-iv, d-ii
 D) a-ii, b-iv, c-i, d-iii

2019 TRB - PG Zoology தேர்வில் Surya Coaching - ன் சாதனைகள் :

தேர்வு செய்யப்பட்ட 133 பேரில் 71 பேர் தேர்ச்சி (53.4%)

96. **Assertion(A)** : Seasonal isolation is a type of prezygotic isolation in populations
Reason (R) : The breeding period of mating individuals is different for different species in seasonal isolation
- A) Both A and R are true and R is correct explanation of A
 B) Both A and R are true, but R is not correct explanation of A
 C) A is true, but R is false
 D) A is false, but R is true
97. In case of **allopatric speciation**
 A) a small segment of the original population becomes reproductively isolated
 B) a population of a species enters a new niche
 C) a part of population becomes geographically isolated from the main population
 D) a new and very different daughter species formed from a semi-isolated peripheral population
98. In most birds, after batching, the young ones normally being to follow their mothers. The type of behavior is known as
 A) reflex behavior B) parental care C) imprinting D) trial and error learning
99. Which of the following differences are **correct** between allopatric and sympatric speciation?
- | Allopatric speciation | | Sympatric speciation |
|--|---|--|
| I) Occurs from segment within a | - | Occurs in spatially isolated population |
| II) Rarely the isolating mechanism breaks down | - | Isolating mechanism more susceptible to break down. |
| III) Speciation is slow | - | Speciation is rapid. |
| IV) Barrier is physical | - | Barrier is genetic and ecological. |
| V) Interspecific crossings barrier are fewer | - | Interspecific crossings barrier are more pronounced. |
- A) I, III and V B) II and III C) III, IV and V D) II, III and V
100. Darwin realized about the inadequacies of the natural selection theory **because**
 A) it did not explain presence of vestigial organs in animals
 B) environmental struggle could not be explained
 C) it failed to explain differential reproduction
 D) it could not explain inheritance of useful variations
101. Refer to the following statements
 i) Formation of oxygen, carbon, nitrogen, sulphur
 ii) Formation of nitrogen bases, amino acids, glycerol
 iii) Formation of H_2O , CO_2 , CH_4 , NH_3
 iv) Formation of prebiotic soup
- Select the **correct arrangement** of above given option in respect to chemogeny
 A) i → iv → ii → iii B) i → iv → ii → iii
 C) i → ii → iv → iii D) i → iii → iv → ii

102. A small group of persons, leave their homes to find a new settlement which eventually cause a variation in their allele frequency. **It explains**
 A) bottleneck effect B) founder effect C) gene migration D) gene mutation
103. When two species of different genealogy come to resemble each other as a result of adaptation, the phenomenon is termed
 A) Divergent evolution B) micro – evolution
 C) Co- evolution D) Convergent evolution
104. Fill the blank spaces in the table given below by selecting the **correct** option
- | Genus | Epochs | Cranial capacity |
|-----------------------------------|-------------|------------------|
| i) <i>Australopithecus</i> | A | 500 |
| ii) B | Pleistocene | 800-1100cc |
| iii) <i>Homo neanderthalensis</i> | Pleistocene | C |
| iv) <i>Homo sapiens fossils</i> | D | 1650cc |
- A) A-Miocene, B-*Homo habilis*, C-450cc, D-Holocene
 B) A-Pliocene, B-*Homo erectus*, C-1300-1600cc, D-Holocene
 C) A-Holocene, B-*Homo sapiens*, C-700cc, D-Miocene
 D) A-Pleistocene, B-*Homo habilis*, C-700cc, D-Miocene
105. Given below are four statements i-iv regarding **geological time scale**. Read them carefully
 i) Paleozoic era is the era of ancient life
 ii) Ordovician period is the age of vertebrates
 iii) Carboniferous period is the age of reptiles
 iv) Proterozoic era is the era of early life
 Which of the above two statements are **incorrect**?
 A) i and iv B) ii and iii C) ii and iv D) a and iii
106. Consider the following statements, The Holarctic region includes the **subregions**
 i) Palearctic ii) Nearctic iii) Antarctic iv) Ethiopian
 Which of the above statements are **correct** ?
 A) i and ii B) ii and iii C) iii and iv D) I and iv
107. When extreme individuals are eliminated from the population it is called as
 A) stabilizing selection B) diversifying selection
 C) sexual selection D) directional selection
108. Which of the following statements are **incorrect**?
 I) Hugo de Vries called mutations as saltation because they brought speciation.
 II) Genetic drift is directional and can cause elimination of certain alleles in the population.
 III) Genetic bottleneck effects leads to a sharp increase in the size of population or anthropogene due environmental
 IV) Founder effect results in formation of a different genotype in a new settlement.
 A) I and IV B) III and IV C) I and III D) II and III

சிறப்பு அம்சங்கள்

1. Unit wise - study materials எளிய நடை முறையில் தெளிவான விளக்கத்துடன் கொடுக்கப்படும்.
2. Basic Concept Material அனைத்து Unit - களுக்கும் கொடுக்கப்படும்.
3. ஒவ்வொரு Unit - க்கும் 500 to 600 கேள்விகள் வினா வங்கியாக (பதிலுடன்) கொடுக்கப்படும்.
4. 2001 முதல் 2019 ம் ஆண்டு வரை நடத்தப்பட்ட முந்தைய TRB போட்டித் தேர்வுகளின் கேள்விகள் பதிலுடன் கொடுக்கப்படும்.
5. கடந்த ஆண்டு வரை நடைபெற்ற National Level Medical Entrance Test Questions with Key (UG and PG Standard) Printout கொடுக்கப்படும்.
6. Unit wise Test - ஒவ்வொரு வாரமும் சனி மற்றும் ஞாயிறு இரு நாட்களும்.
7. Education, Psychology & GK பாடங்கள் அனுபவமிக்க ஆசிரியரை வைத்து நடத்தப்பட்டு தனி கவனம் செலுத்தப்படும்.
8. கடந்த ஆண்டு வரை நடத்தப்பட்ட முந்தைய CTET, CSIR, SET, DIET Education and Psychology Question Bank with Key கொடுக்கப்படும்.
9. உங்கள் Mobile நம்பருக்கு WhatsApp மூலம் தினந்தோறும் TRB க்கான கேள்விகள் மற்றும் Current Affairs பயிற்சிக்காக அனுப்பப்படும்.
10. அனைத்து தேர்வுகளும் Online Test மற்றும் Original OMR Sheet மூலம் நடத்தப்படும்.
11. 10 திருப்புதல் தேர்வு மற்றும் 6 TRB Model Exam பயிற்சி காலத்திற்குள் நடத்தி முடித்து TRB Exam வெற்றி பெற பயிற்சி அளிக்கப்படும்.
12. ஆண், பெண் இருபாலருக்கும் தனித்தனி விடுதி வசதி உள்ளது.
13. வகுப்புகள் சனி மற்றும் ஞாயிறு கிழமைகள் மட்டும்.
14. வேறெங்கும் கிளைகள் கிடையாது.

100%
உறுதி !!

அடமிஷனுக்கு அனுக வேண்டிய முகவரி

SURYA TRB COACHING CENTRE

MADURAI (a place.. You try to achieve)

(Exclusively for ZOOLOGY)

" The No.1 Institute for Zoology "

M.C. School, Pandi Bazar, Near Periyar Bus Stand, Madurai - 1

(Run by : Surya Educational Trust - Regd.)

செல் : 8124602428, 9443564713, 7598302428



பயிற்சி !

முயற்சி !!

உறுதியான வெற்றி !!!



109. During industrial revolution in Great Britain, the population of black moths increased more than the white moths because of
 A) natural selection B) reproductive isolation
 C) hybridisation D) Both A and B
110. When animal species of distinct group develop similar analogous organs, this is called
 A) Divergent evolution B) Convergent evolution
 C) Mega evolution D) Retrogressive evolution

Education and Psychology

111. Helen Keller Education widely followed in
 A) Hearing impaired children B) Visually impaired children
 C) Non formal education D) Special education
 ஹெலென் கெல்லர் கல்விமுறை எதில் பின்பற்றப்படுகிறது?
 A) காது கேளாதோர்க்கான கல்வி B) பார்வையற்றோர்க்கான கல்வி
 C) முறைசாராக் கல்வி D) சிறப்புக் கல்வி
112. Population education familiarized by
 A) Griffilz B) Patterson C) Simon D) Wayland
 மக்கள் தொகை கல்வியை பிரபலப்படுத்தியவர்
 A) கிரிபில் B) பேட்டர்சன் C) சைமன் D) வேலண்ட்
113. In which United Organization strongly suggested primary education
 A) UNO B) WHO C) UNICEF D) UNESCO
 கீழ்க்கண்ட எந்த அமைப்பு ஆரம்பக் கல்வியினை பரிந்துரை செய்தது?
 A) UNO B) WHO C) UNICEF D) UNESCO
114. "FIACS" is related to
 A) Classroom interaction B) Management studies
 C) Motivation D) Creative expression
 "FIACS" எதனுடன் தொடர்புடையது?
 A) வகுப்பறை இடைவினை B) மேலாண்மை படிப்பு
 C) ஊக்கப்படுத்துதல் D) படைப்பாற்றல் வெளிப்பாடு
115. Sign of Chola Kingdom
 A) Arrow B) Elephant C) Fish D) Tiger
 சோழர்களின் சின்னம்
 A) வில் B) யானை C) மீன் D) புலி
116. The following one is related to Buddhist system of Education
 i. Group Discussion ii. Monitoring system iii. Pali language
 iv. Upanayana v. Upasampantha
 A) iii, iv only B) ii, iii, iv only C) i, iii, iv only D) i, iii, v only
 புத்த மதக் கல்வி முறையோடு தொடர்புடைய ஒன்று
 i. குழு விவாத முறை ii. வகுப்பறை தலைவன் iii. பாலி மொழி
 iv. உபநயனா v. உபசம்பந்தா
 A) iii, iv only B) ii, iii, iv only C) i, iii, iv only D) i, iii, v only

117. Experimental school started at
 A) Switcherland B) India C) England D) America
 பரிசோதனைப் பள்ளி ஆரம்பிக்கப்பட்ட இடம்
 A) சுவிட்சர்லாந்து B) இந்தியா C) இங்கிலாந்து D) அமெரிக்கா
118. Which educationist introduced 'Linear Programming method'?
 A) Glacier B) Thomas Effkilpart C) Skinner D) Crowder
 நிரல்வழித் திட்ட முறையினை அறிமுகப்படுத்திய கல்வியாளர்
 A) கிளேசியர் B) தாமஸ் எப்கில்பர்ட் C) ஸ்கினனர் D) கிரௌடர்
119. Prohibition of employment of children in factories - under which constitutional provisions
 A) Article -41 B) Article-46 C) Article-24 D) Article-48
 குழந்தைகளை தொழிற்சாலைகளில் பணியில் அமர்த்தக்கூடாது என்று பரிந்துரைத்த அரசியல் சாசனம்
 A) Article -41 B) Article-46 C) Article-24 D) Article-48
120. NLM was launched in which year?
 A) 1978 B) 1988 C) 1998 D) 1977
 NLM தோற்றுவிக்கப்பட்ட ஆண்டு
 A) 1978 B) 1988 C) 1998 D) 1977
121. RTE Act came into force in India on
 A) 01-04-2010 B) 04-09-2002 C) 01-04-2008 D) 01-04-2007
 கல்வி உரிமைச் சட்டம் இந்தியாவில் நடைமுறைக்கு வந்த நாள்
 A) 01-04-2010 B) 04-09-2002 C) 01-04-2008 D) 01-04-2007
122. Open University was started in England on
 A) 1966 B) 1976 C) 1969 D) 1979
 திறந்த நிலைப் பல்கலைக்கழகம் இங்கிலாந்தில் ஆரம்பிக்கப்பட்ட ஆண்டு
 A) 1966 B) 1976 C) 1969 D) 1979
123. Who is the founder of Sainik School in India?
 A) V.K.krishnan Menon B) V.K.Raj Menon
 C) K.V.Rajeev Menon D) V.K.Menon Krishnan
 இந்தியாவில் சைனிக பள்ளிகளுக்கு அடித்தளமிட்டவர்
 A) V.K. கிருஷ்ணன் மேனன் B) V.K. ராஜ் மேனன்
 C) K.V. ராஜீவ் மேனன் D) V.K. மேனன் கிருஷ்ணன்
124. Which of the following one is a plan for the development of women?
 A) Swacht Bharat B) Mahila Samakhya
 C) Swasthik Samakhya D) Rashtriya Samakhya
 பெண்களின் முன்னேற்றத்திற்காக தொடங்கப்பட்ட திட்டம்
 A) சுவட்ச் பாரத் B) மஹிலா சமக்யா
 C) ஸ்வஸ்திக் சமக்யா D) ராஷ்டிரிய சமக்யா

125. **"Sociogram"** is developed by
 A) Wood B) Sachs C) Moreno D) Russell
 சமூக விளக்கப்படம் யாரால் விளக்கப்பட்டது
 A) உட் B) சாக்ஸ் C) மொரேனோ D) ரஸ்ஸல்
126. Navodhaya School is located at Tamil Nadu
 A) Thiruvarur B) Coimbatore C) Trichy D) None of these
 தமிழ்நாட்டில் நவோதயா பள்ளி அமைந்துள்ள இடம்
 A) திருவாரூர் B) கோயம்புத்தூர் C) திருச்சி D) எதுவுமில்லை
127. Father of Teaching Machines -----
 A) Sydney Dhall B) Sydney Pressey C) R.Gagne D) Meyer
 கற்பித்தல் இயந்திரங்களின் தந்தை -----
 A) சிட்னி தால் B) சிட்னி பிரெஸ்ஸி C) ஆர். காக்னே D) மேயர்
128. In which committee strongly emphasis **"SUPW"**?
 A) Woods Despatch B) Tarachand Committee
 C) UGC – Committee D) Eshwarbai Patel Committee
SUPW முறையை வலியுறுத்திய கல்விக்குழு
 A) உட்ஸ் அறிக்கை B) தாராசந்த் கல்விக்குழு
 C) UGC குழு D) எஸ்வர்பாய் பட்டேல் குழு
129. **"Learning without Burden"** suggested by
 A) Mukurjee Committee B) Yashpal Committee
 C) Mudaliyar Committee D) Ramamoorthy Committee
 சுமையற்ற கற்றலை பரிந்துரைத்த கல்விக்குழு
 A) முகர்ஜி குழு B) யஷ்பால் குழு C) முதலியார் குழு D) ராமமூர்த்தி குழு
130. National Institute for the Mentally Handicapped Children was set up at
 A) Mumbai B) Calcutta C) Dehradun D) Hyderabad
 மன வளர்ச்சி குன்றிய குழந்தைகளுக்கான தேசிய நிறுவனம் ஏற்படுத்தப்பட்ட இடம்
 A) மும்பை B) கல்கத்தா C) டேஹ்ராடூன் D) ஹைதராபாத்
131. Carl Rogers is a chief exponent of
 A) Thinking B) Reasoning C) Counselling D) Guidance
 கார்ல் ரோஜர்ஸ் எதனுடன் தொடர்புடையவர்
 A) சிந்தனை B) ஆராய்ந்தறிதல் C) அறிவுரை பகர்தல் D) வழிகாட்டல்
132. **Vocational Interest Blank Test** explained by
 A) Kuder B) Pressley C) Likert D) Strong
 தொழிற் கவர்ச்சி பட்டியலை விவரித்தவர்
 A) கூடர் B) பிரெஸ்லி C) லீகர்ட் D) ஸ்ட்ராங்
133. Murray's principle mainly focused on
 A) Physiological theory B) Achievement theory
 C) Needs theory D) Reduction theory
 முர்ரேயின் கோட்பாடு எதனுடன் தொடர்புடையது?
 A) உடலியக்கக் கோட்பாடு B) அடைவுக் கோட்பாடு
 C) தேவைக் கோட்பாடு D) குறைப்புக் கோட்பாடு

134. The word Scheme – idealized by
 A) Jean Piaget B) R.Gagne C) Freeman D) Skinner
 ஸ்கீமா என்ற வார்த்தையை உருவாக்கியவர்
 A) ஜீன் பியாஜே B) ஆர்.காக்னே C) ஃப்ரீமேன் D) ஸ்கினர்
135. Scholosberg explained
 A) Emotions B) Developmental Tasks C) Cognition D) Imagination
 ஷாலஸ்பெர்க் விவரித்தது
 A) மனவெழுச்சி B) வளர்ச்சிசார் செயல்கள் C) அறிதிறன் D) கற்பனை
136. “Level of Aspiration” defined, explained by
 A) Frank B) Hoppe C) Tempo D) All of them
 அவாவு நிலையுடன் தொடர்புடையவர்கள்
 A) ஃப்ராங்க் B) ஹோப் C) டெம்போ D) அனைத்தும்
137. Sheldon was an
 A) English Psychologist B) French Psychologist
 C) Swedish Psychologist D) American Psychologist
 ஷெல்டன் என்பார்
 A) ஆங்கிலேய உளவியலாளர் B) பிரெஞ்சு உளவியலாளர்
 C) சுவீடன் உளவியலாளர் D) அமெரிக்க உளவியலாளர்
138. Which of the following one is not a defence mechanism?
 A) Displacement B) Sympathy C) Rationalization D) Conflict
 கீழ்க்கண்டவற்றுள் எது தற்காப்பு நடத்தை அல்ல?
 A) இடமாற்றம் B) அனுதாபம் C) காரணம் கற்பித்தல் D) மனப்போராட்டம்
139. Co-twins research done by
 A) Gessell B) Thomson C) Gagne D) A & B
 ஒரு கரு இரட்டையர்களுக்கான சோதனை நடத்தியவர்
 A) கெஸல் B) தாம்சன் C) காக்னே D) A & B
140. Juke family research done by
 A) Goddard B) Freeman C) Dugdale & Karl Pierson D) Somsy
 ஜூக் குடும்பத்தினை ஆராய்ந்தவர்
 A) கட்டார்டு B) ஃப்ரீமேன் C) டக்லேட் & கார்ல் பியர்சன் D) சோம்ஸ்கி

“Hard Work Never Fails”



SURYA TRB COACHING CENTRE

(Exclusively for Zoology) Madurai - 1

Contact : 8124602428, 9443564713, 7598302428

TRB - PG Zoology 2019 Results

தேர்வு செய்யப்பட்ட 133 பேரில் 71 பேர் தேர்ச்சி (53.4%)

State Level Rank Achievement - 2019



State Level Rank I to X = 27 Candidates

State I Rank = 2, State IV = 1, State V = 3,
 State VI = 1, State VII = 3, State VIII = 7,
 State IX = 6, State X = 4

State First Rank Holders

V.Jothi
M.Muthusethukkarasi

Again we proved the
 No.1 Institute for Zoology

Admission
 Going on...